

2022 SMP Packages I-V & Capitol

Sirahuen Guajardo Jr., P.E.

Project Engineer

Efrain Aguirre, E.I.T.

Graduate Engineer II

Susan Rodriguez

Contract Administrator

Florinda Gonzales

Contract Administrator

Stella Manzello

Contract Administrator

Marisol V. Robles

SMWVB Program Manager, SAWS

Andrew J. Wilkinson, P.E.

Project Engineer of Record

Greg Blackburn, P.E.

Project Engineer of Record

Bryan J. Spina, P.E.

Project Engineer of Record

Steven H. Thai, P.E.

Project Engineer of Record



**San
Antonio
Water
System**

Non- Mandatory Pre-Bid Meeting

September 17, 2021

MAKING SAN ANTONIO
WATERFUL



Oral Statements

Oral statements or discussion during the pre-bid meeting today will not be binding, nor will it change or affect the terms or conditions within the Plans and Specifications of these Projects. Changes, if any, will be addressed in writing only via an Addendum.



Agenda

- General Information
- SMWVB Requirements
- Contract Solicitation Website – Recent Changes
- Vendor Registration
- Key Reminders
- IFB Schedule
- Bid Packet Preparation
- Contract Requirements
- Project Overview
- General Information
- Special Conditions
- Supplemental Conditions
- Project Details



General Information

- This is a Non-Mandatory pre-bid meeting
- Attendees should sign-in via chat on WebEx
- This presentation and the attendance sheet will be posted to the SAWS website
- Construction services being procured through IFB



Project Information

	2022 SMP Package I
Construction Estimate	\$1,317,524.00
Contract Duration	275 Days

	2022 SMP Package II
Construction Estimate	\$931,348.78
Contract Duration	150 Days

	2022 SMP Package III
Construction Estimate	\$2,244,100.98
Contract Duration	290 Days



General Information

	2022 SMP Package IV
Construction Estimate	\$2,095,155.00
Contract Duration	210 Days

	2022 SMP Package V
Construction Estimate	\$1,716,092.00
Contract Duration	270 Days

	2022 SMP Capitol from Hildebrand Ave to Fredericksburg Rd
Construction Estimate	\$1,563,606.00
Contract Duration	210 Days



Aspirational SMWB Goal

Industry	Aspirational SMWB Goal
Construction	20%

The aspirational SMWB goal is 20% of your total bid price.

Accepted SMWB Certification Agency

- **South Central Texas Regional Certification Agency**

(Includes the Texas Historically Underutilized Business “HUB” Program, MBE, WBE, SBE)

Minimum Qualifications for SMWB recognition:

- SBE-Certified (even MBEs and WBEs)
- ***Local office or local equipment yard***



Good Faith Effort Plan (GFEP) FAQs

- Q: Is the 20% SMWB goal mandatory?**
 A: No, but we ask prime contractors to do their best with good faith outreach efforts. If the goal is not met, proof of outreach efforts is required with the submittal.
- Q: What if I am having trouble finding SMWB subcontractors?**
 A: Please email the SMWB Program Manager with the scopes of work you are seeking. You will receive lists of local SMWB-certified firms to contact.
- Q: What if my business is SMWB-certified? Do I need to find SMWB subs?**
 A: If your firm is SMWB-certified, you will most likely meet the goal. However, the GFEP is a required document, and a good faith outreach effort is still necessary.
- Q: Do I need to include all my subcontractors in the GFEP or just those that qualify towards the SMWB goal?**
 A: All subcontractors need to be included in the GFEP, even those that may not count towards the SMWB goal.
- Q: What if I have questions about the GFEP?**
 A: Please contact the SMWB Program Manager at 210-233-3420, or at Marisol.Robles@saws.org. GFEP questions can be asked at any time before the submittal is due.



Post Award: Subcontractor Payment & Utilization Reporting (S.P.U.R.) System

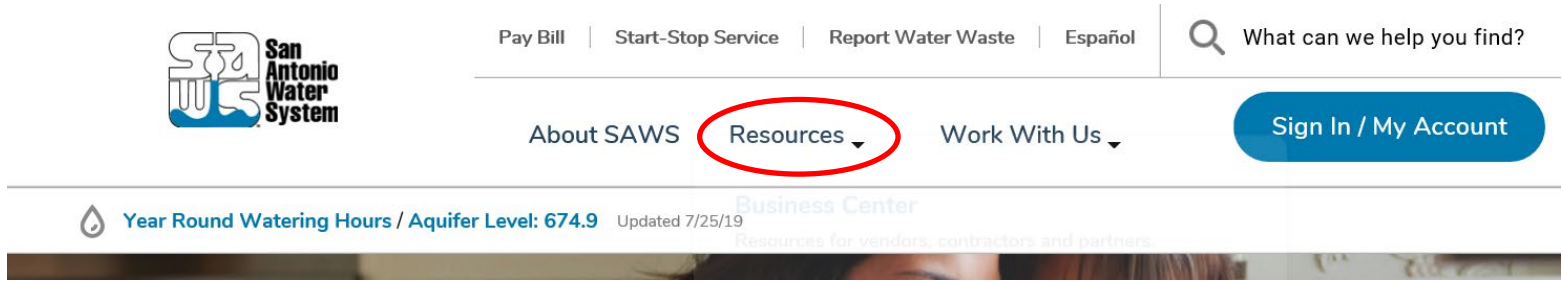
- 1. Subcontractor & Supplier Payment Tracking
- 2. Subcontractor and Supplier Additions or Substitutions
- 3. LCP Tracker
- 4. Must be Current and Accurate before Retainage is released

<https://saws.smwbe.com>



Contract Solicitations Website – Recent Changes

- To locate the Contract Solicitations website choose Resources




- At the drop down menu choose Contract Solicitations



Contract Solicitations Website – Recent Changes

- Choose the specific project
- The following buttons are now located under the advertisement:
 - Notify Me
 - Plan Holder’s List
 - Downloads
 - Plans
 - Specs
 - Addendums
 - Geotechnical Data Report






**Non-Mandatory
Pre-Bid Meeting**

10:00 AM, Tuesday Aug. 6, 2019


San Antonio Water System Customer Service
Building, 2800 U.S. Hwy 281 N, San Antonio,
Texas 78212; Conference Room CR-C145



Notify Me

Receive updates sent straight to your inbox.

[Subscribe](#)




Plan Holders List

View plan holders list.


[View List](#)

Downloads

Specifications 

Jul. 31, 2019

Note: You must be logged in to access this document.

Plans 

Jul. 31, 2019

Note: You must be logged in to access this document.



Vendor Registration & Notification (VRN)

- Please register through SAWS Vendor Registration Program on the SAWS website at www.saws.org to ensure access to the latest information.
- To receive updates on specific projects, registered vendors must ‘Subscribe’ to the project by selecting the project, and clicking ‘Subscribe’ under the Notify Me box.

https://apps.saws.org/Business_Center/Contractsol/



Notify Me

Receive updates sent straight to your inbox.



Key Reminders

- All questions should be sent in writing to the corresponding Contract Administrator by email or fax.
- Please identify the project by its associated solicitation number.
- Contractors should not contact the SAWWS project engineer, the consultants for this project, or any other SAWWS staff up until Board award.
- Late bids will not be accepted, and will be returned unopened.
- Due to the COVID-19 emergency and to protect the health of the public, SAWWS is implementing new procedures for the submission of bids.
- Bids will be received either Electronically or through Sealed bids.
- Electronic bids will be received via the secure SAWWS FTP site.
- Sealed bids will be received by Contract Administration, 2800 U.S. Hwy 281 North, Tower II, Customer Center Building, via a dropbox located on the left wall when walking through the first set of double glass doors of the main Tower II entry on the north side of the building.
- If bids will be delivered in person to SAWWS, Bidders should allow sufficient travel time.



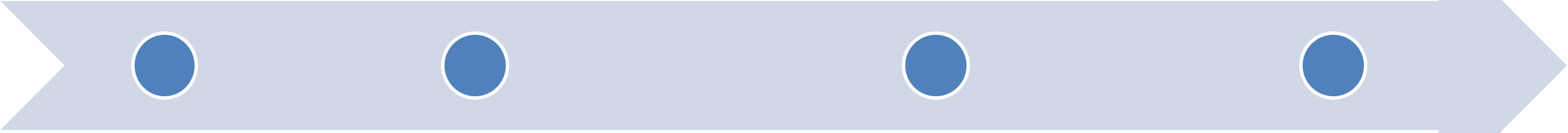
IFB Schedule

Questions Due

September 22, 2021 -
2:00 pm (I-V & Capitol)

Bids Due

October 4, 2021-9:00 am (I)
10:00 am (II)
October 5, 2021-10:30 am (III)
11:30 am (IV)
October 6, 2021-10:00 am (V)
11:00 am (Capitol)



Answers Posted

September 27, 2021-
4:00 pm (I-II)
September 28, 2021-
4:00 pm (III-IV)
September 29, 2021-
4:00 pm (V-Capitol)

Board Award

November
2, 2021

Bid Packet Preparation

- Utilize the Bid Packet Checklist within the specifications
 - All items due with the bid
- Double check all mathematical calculations and verify all extensions
- Addendums are acknowledged on the Bid Proposals
- Ensure Mobilization & Prep ROW Line Item does not exceed the percentage allowed
- References and contact information must be verified prior to submitting bid(s)
- Within one day of bid opening the apparent Low Bidder shall submit a Baseline Schedule with an assumed NTP date of January 3, 2022.



Contract Requirements

Prevailing Wage Rate and Labor Standards – Section 2.10 of the General Conditions

- Certified payroll to be submitted on weekly basis
- Wage decisions are included within the specifications
- Contractors to utilize LCP Tracker
- Site visits are random and unannounced
- Interviews will be Conducted and will be private & confidential
- Payroll records are subject to review
- All apprenticeship programs will need to be approved by Department of Labor prior to starting
- Contractors are responsible for sub-contractor payroll
- Late payrolls delay contractor payments from SAWWS



Contract Requirements

- Insurance requirements are found in Section 5.7 of the GCs
 - Pollution Liability is required
 - Maintain insurance coverage during the construction of this Project
- Compliant prior to executing the contract
- Will ask for insurance prior to Board award to expedite execution of the contract
 - Any deficiencies must be corrected prior to Board award



Contact Information

Contact Name	Title	Telephone Number	Email address	Project
Florinda Gonzales	Contract Administrator	210-233-3914	Florinda.Gonzales@saws.org	Package I & IV
Susan Rodriguez	Contract Administrator	210-233-3070	Susan.Rodriquez@saws.org	Package II - III
Stella Manzello	Contract Administrator	210-233-3854	Stella.Manzello@saws.org	Package V - Capitol
Marisol V. Robles	SMWB Program Manager	210-233-3420	Marisol.Robles@saws.org	

Project Overview

- Bids for construction are for specified contracts with mostly open cut replacement:

Contract	Water Scope	Sewer Scope
Package I	1,885 LF of 6 to 8-in	2,828 LF of 8-in
Package II	NA	15 LF of 8-12-in 1,935 LF of 15 to 18-in
Package III	5,615 LF of 6 to 8-in	1,476 LF of 8-in
Package IV	433 LF of 6 to 8-in 1,535 LF of 12-in	2,141 LF of 8-in
Package V	4,553 LF of 6, 8, & 12-in	966 LF of 8-in
Capitol	5,140 LF of 2, 6, 8, 10, & 12-in	NA

- Projects are part of 2022 CoSA’s Street Maintenance Program (SMP)
- Contractor is to become familiar with the plans, specifications and the project site.



Project Overview

General Information

- Traffic Control Plans, Bypass Pumping Plan will be responsibility of contractor and at no cost to SAWS
- CPS Energy Power Pole bracing will be reimbursed through an allowance as needed.
 - Contractor to coordinate pole bracing with CPS Energy
- Contractor's Bid Packet Checklist
 - Statement of Bidder's Experience must be submitted with bid
 - Baseline Construction Schedule with NTP date of January 3rd (apparent low bidder)
- Submittals can be turned in as soon as receiving notification of contract award after CPMS training (if necessary) has been completed
- Mobilization and Prep ROW are separate pay items per package
 - Not to exceed 15% combined
- Prep ROW includes clearing and grubbing, tree pruning, tree protection.
- Traffic Handling and Barricades will be paid per site



Project Overview

Special Conditions

- Final completion of all projects shall be achieved in the specified calendar days of each contract.
- All work on these packages is anticipated in CoSA ROW.
- Contractor should schedule work accordingly to complete the project within the specified days.
- Contractor must obtain CoSA ROW permit to start work.
 - <http://rowpermits.sanantonio.gov/>



Project Overview

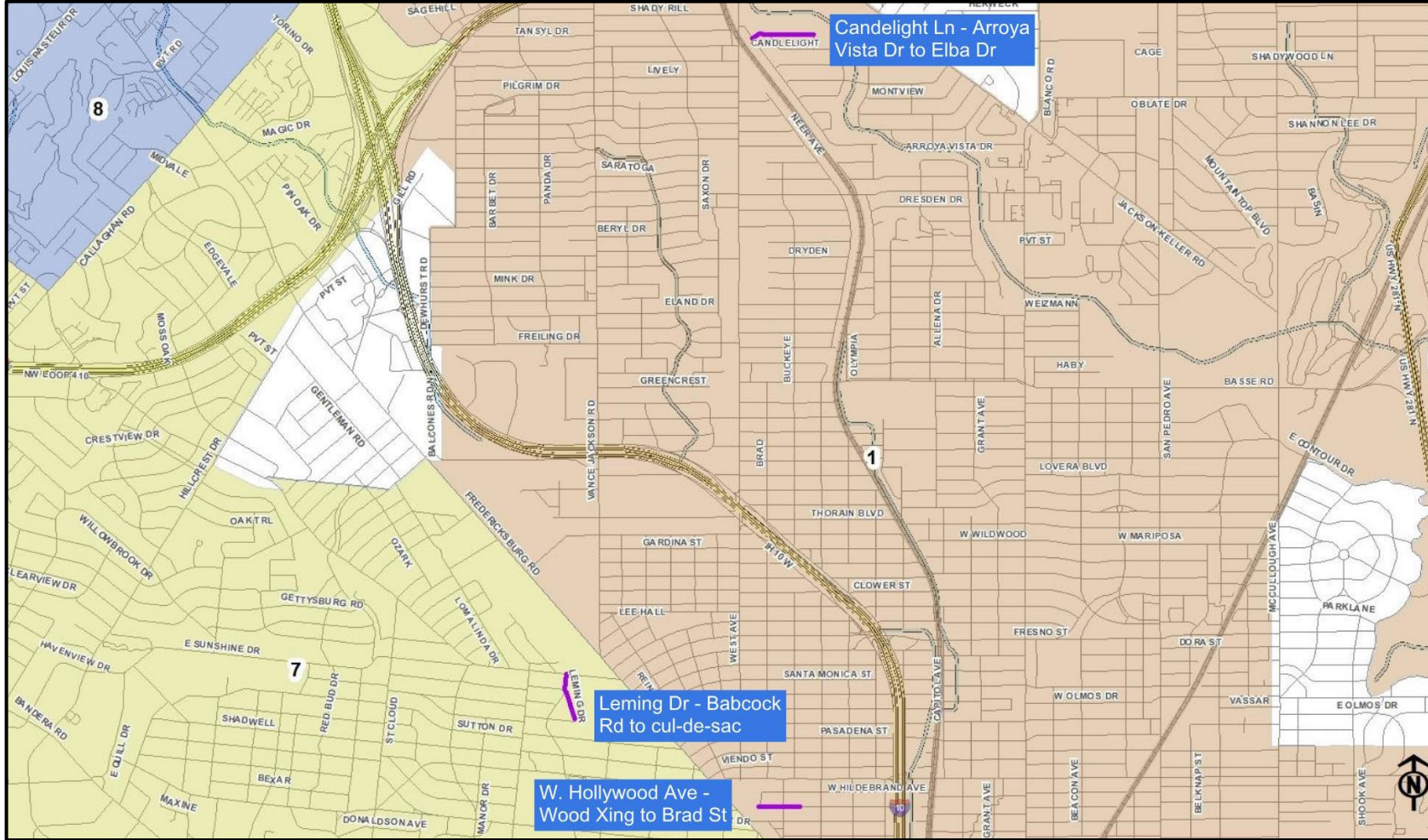
Supplemental Conditions

- Contractor shall perform the work with its own organization on at least 40% of the total original contract price.
- Liquidated damages will be assessed for this project.
- Contractors will submit a baseline schedule with bids (NTP Date January 3rd 2022.)



Project Details

2022 SMP Package I
(Candlelight Ln, W. Hollywood Ave, Leming Dr)



Project Details (Package I)

- Package I Scope

- Three sites: Candlelight Ln, Leming Dr, & W Hollywood Ave
- Water – 1,990 LF of 6- to 8-inch PVC
- Sewer – 2,760 LF of 8-inch PVC

- Site Specific Scope

Candlelight Ln (Arroya Vista to Elba Dr.)

- Water – 1,200 LF of 8-inch PVC (some 6-inch PVC at tie-ins)
- Sewer – 1,250 LF of 8-inch PVC

Project Details (Package I)

Site Specific Scope (cont.)

Leming Dr (Babcock Rd. to Wilson Blvd.)

- Water – 790 LF of 8-inch PVC (some 6-inch PVC at tie-ins)
- Sewer – 650 LF of 8-inch PVC

W Hollywood Ave (Wood Crossing to Buckeye Ave)

- Water – no work in scope
- Sewer – 860 LF of 8-inch PVC

Project Details (Package I)

- Candlelight Ln:
 - Existing Utilities
 - Overhead electric, sanitary sewer, water main, gas, and fiber optic
 - Sewer main to be removed and replaced in place
 - Water mains to be encased in areas near proposed sewer mains and manholes (refer to plans)
 - Sewer laterals to be encased in areas near proposed water services (refer to plans)
 - Removal of AC pipe at tie-ins
 - Pavement restoration to be performed to limits shown in the plans
 - Trench to be restored with 10” Type B HMAC and 2” Type D HMAC
 - 2” mill and overlay at Farwell Dr intersection
 - CoSA Tree Permit
 - Applies to root protection and tree trimming where branches overhang onto street



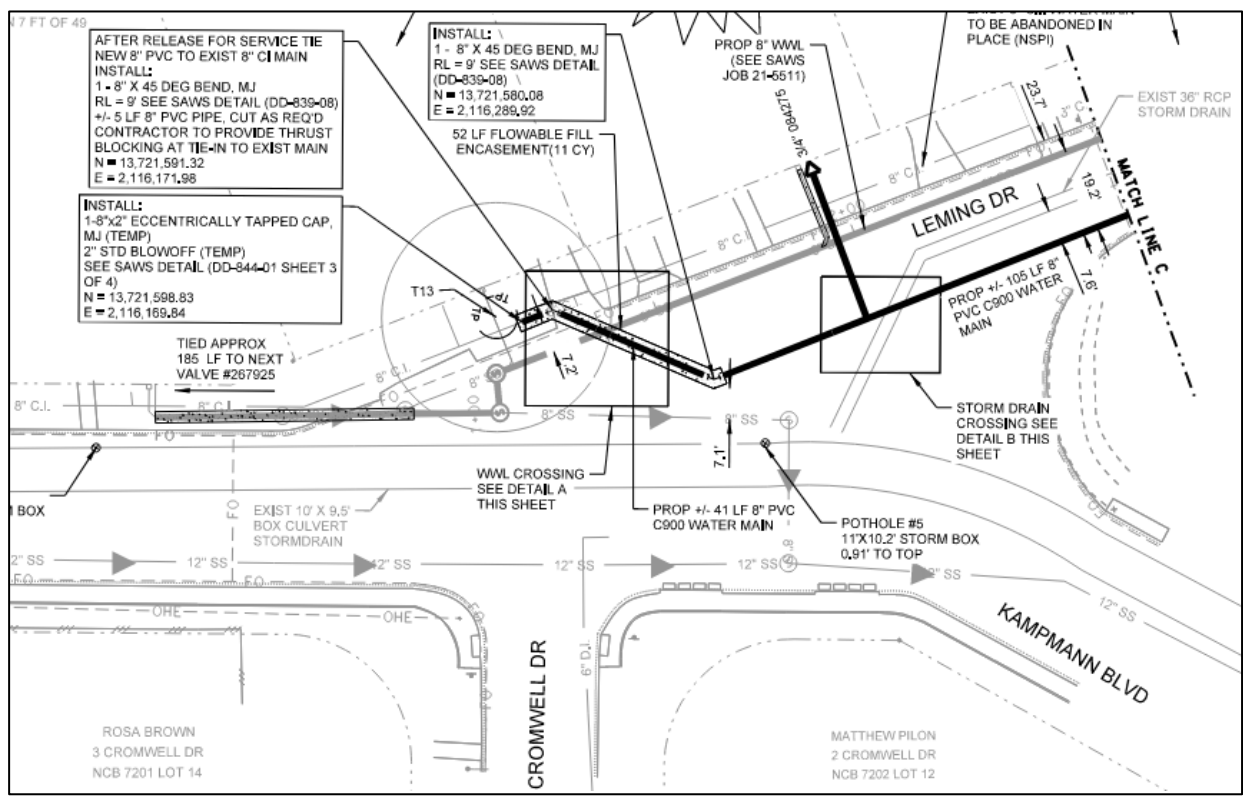
Project Details (Package I)

- Leming Dr:
 - Existing Utilities
 - Overhead electric, sanitary sewer, water main, gas, fiber optic, and storm drain
 - Sewer main to be removed and replaced in place with a section to be abandoned
 - Water mains to be encased in areas near and crossing proposed sewer mains and manholes (refer to plans)
 - Sewer laterals to be encased in areas near proposed water services (refer to plans)
 - Pavement restoration to be performed to limits shown in the plans
 - Trench to be restored with 10” Type B HMAC and 2” Type D HMAC
 - CoSA Tree Permit
 - Applies to root protection and tree trimming where branches overhang onto street



Project Details (Package I)

- Leming Dr:
 - Water and sewer alignments are in close proximity to existing 10' x 9.5' box storm drain and fiber optic line. Potholes ahead of work are very important



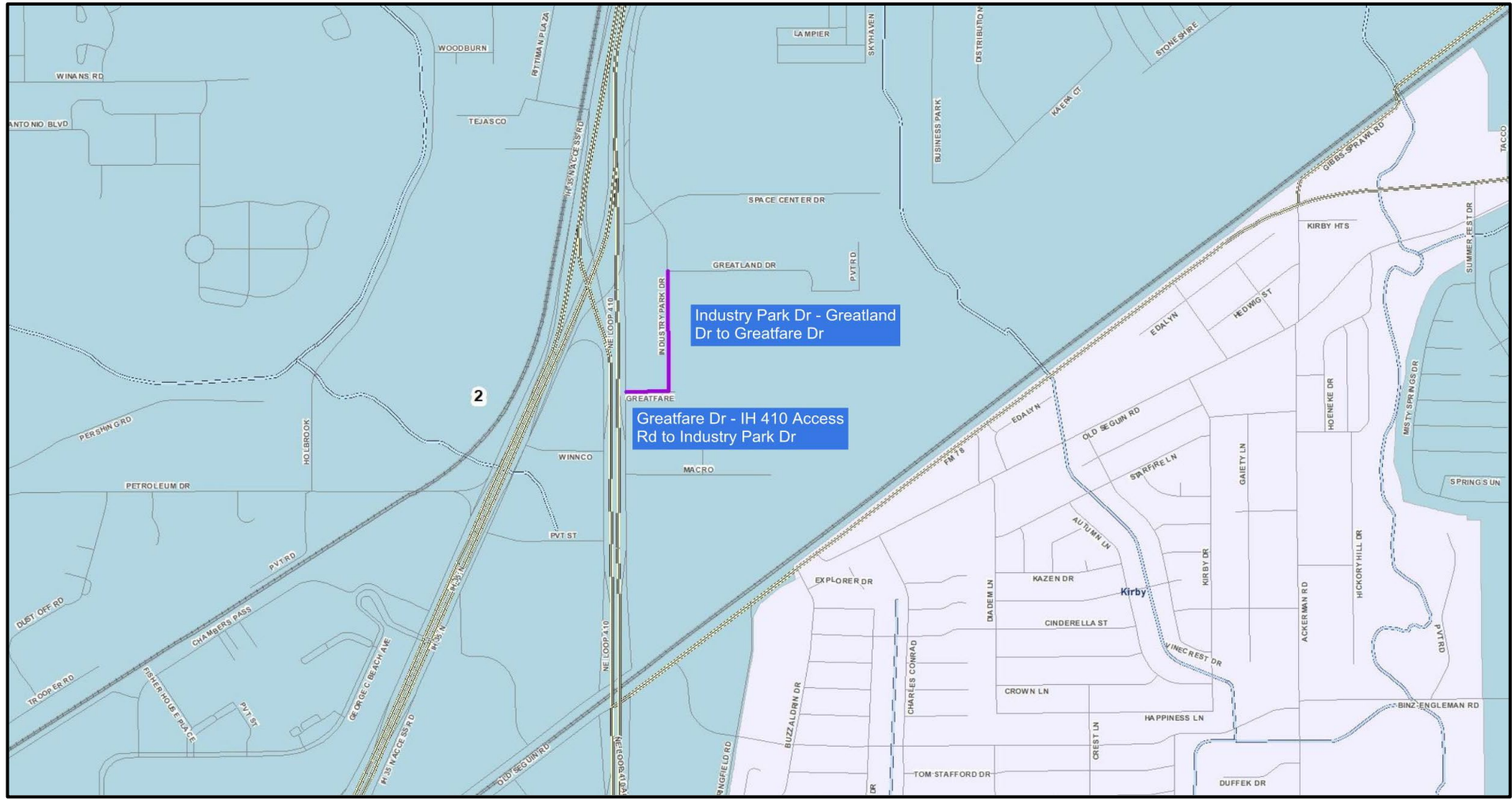
Project Details (Package I)

- W Hollywood Ave:
 - Existing Utilities
 - Overhead electric, sanitary sewer, and water main
 - Sewer main to be removed and replaced in place with a section to be abandoned
 - Sewer laterals to be encased in areas near proposed water services (refer to plans)
 - Pavement restoration to be performed to limits shown in the plans
 - Trench to be restored with 10” Type B HMAC and 2” Type D HMAC
 - CoSA Tree Permit
 - Applies to root protection and tree trimming where branches overhang onto street



Project Details

2022 SMP Package II (Industry Park, Greatfare Dr)



Project Details (2022 SMP Package II)

- Package II Scope

- 2 streets: Greatfare Dr and Industry Park, Approx. 60' ROW (Sewer Only) – 150 Calendar Days
 - Sewer – 1,331 LF of 15-inch PVC, 484 LF of 18-inch PVC, 15 LF of 8" and 12" PVC (Open Cut)
 - 5 Standard Sewer Manholes, 1 drop manhole and 1 permanent doghouse manhole; extra depth required.
 - Abandonment of existing sewer manholes and grouting of existing mains upon completion of new sewer mains.
 - Pre and Post TV Inspections, asphalt pavement restoration, bypass plan, and traffic control and phasing plan.

- Site Specific Scope Overview

- **Greatfare Dr** (410 Loop Access Rd to Greatfare Dr Dead End @ H-E-B Warehouse entrance)
 - Sewer – 440 LF of 18-inch PVC (SDR 26, ASTM F679) by open cut method
 - 1 Permanent Doghouse Manhole at 410 Loop Access Rd, 1 standard sewer manhole, 1 manhole reconstruction
 - 424 LF to be grout abandoned, 2 manholes to be abandoned
- **Industry Park** (Greatfare Dr to Greatland Dr)
 - Sewer – 1,210 LF of 15-inch PVC (SDR 26, ASTM D3034) by open cut method, 120 LF of 15-inch PVC with 30-inch Steel Casing by pipe jacking methods
 - 4 standard sewer manholes, 1 drop manhole, 1 lateral with 2-way cleanout and vertical stacks
 - 1,347 LF to be grout abandoned, 4 manholes to be abandoned



Project Details (2022 SMP Package II)

- Greatfare Dr and Industry Park – Traffic Control
 - Heavy truck traffic anticipated for entire project limits – Contractor will be required to coordinate with all effected businesses along project area for traffic control plan and maintain driveway access during construction.
 - Project area is located near warehouses that operate 24/7 days a week, with low traffic times understood to be at evenings/nights and weekends. Trucks always loading/unloading and park during wait periods along project streets.
 - Work in front of driveways may be required after normal business hours at night or during weekends during low traffic times to minimize impact to businesses.
 - Point of contacts provided in plans and contract documents to major warehouses in project area.
 - Phasing plan to be provided with TCP upon coordination with impacted businesses in the project area to accommodate the heavy truck traffic in the project locations prior to commencing construction.
 - All pavement restoration must be complete, and area opened to traffic prior to proceeding to the next construction phase in phasing plan in order to minimize traffic impact in project area.
 - Contractor shall keep at least half of the street ROW open to traffic for ingress and egress during construction.
 - Work near TxDOT ROW at Greatfare Dr and 410 Loop Access Rd will require coordination with TxDOT.

Project Details (2022 SMP Package II)



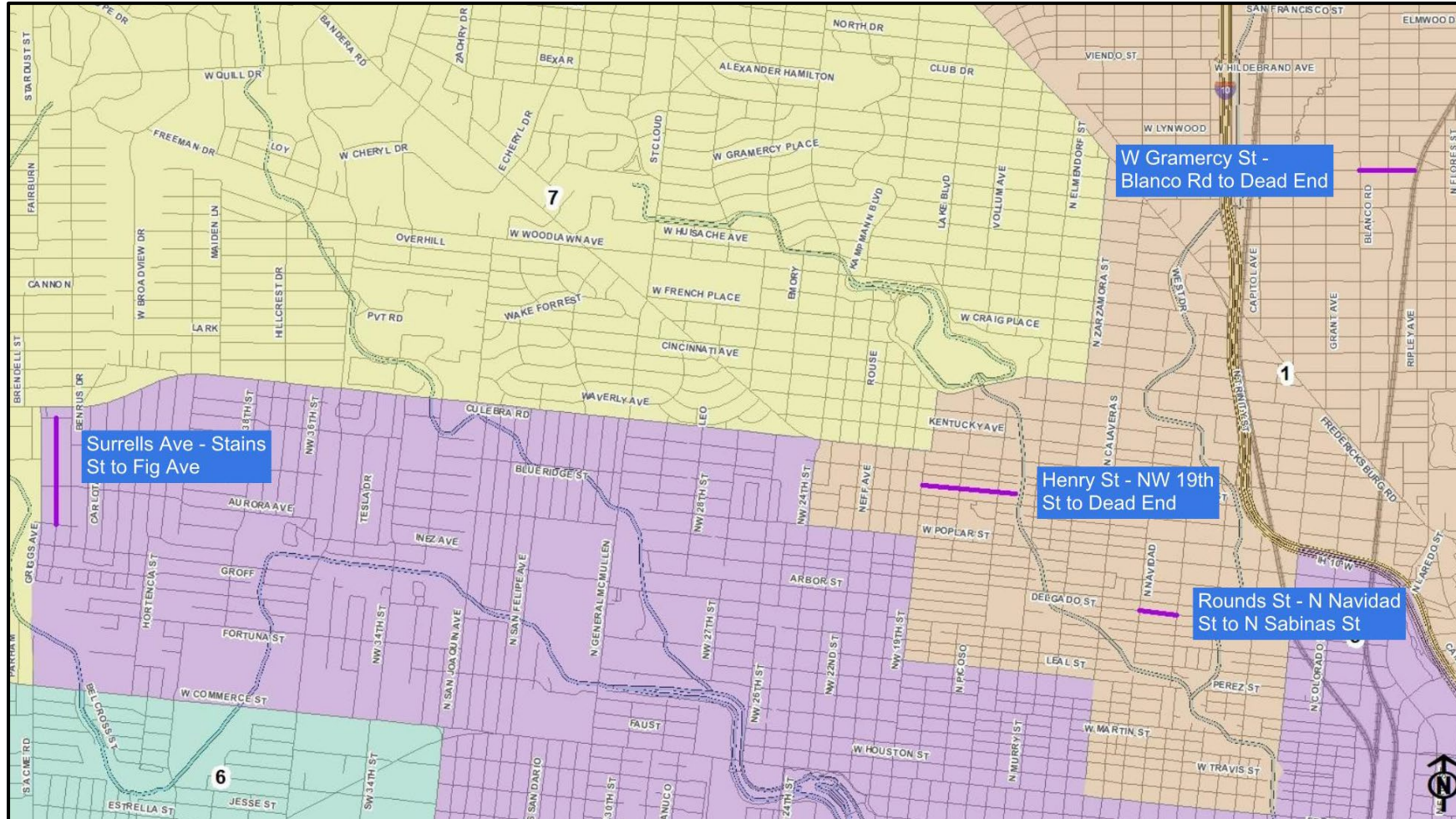
Project Details (2022 SMP Package II)

- Other Details:
 - Project includes sewer mains at approx. 16.5'-19.5' depth. Contractor to provide adequate trench excavation safety protection that complies with as a minimum, OSHA standards for trench excavations.
 - Exist. gas line, storm sewer culvert, water services and 8" AC water main crossings within proposed sewer alignment
 - Contractor to take extreme caution and care, hand digging (NSPI) may be necessary, when uncovering existing utilities (caution star shown on plans at utility crossings with proposed mains).
 - Typical Trench Pavement Restoration to be Performed for Proposed Sewer Main Work and at Abandoned Manholes
 - Trench to be restored with 10" Type B HMAC and 2" Type D HMAC per SAWS sanitary sewer pipe laid in trench detail (DD-804-01).
 - CoSA Tree Coordination Project- Coordination Memorandum provided by CoSA Arborist
 - Any trees found on private property with branches that overhang onto public ROW may require trimming, pruning, and root protection for construction (NSPI)



Project Details

2022 SMP Package III
(Henry St, Surrels Ave, W. Gramercy Pl, Rounds St)



Project Details (2022 SMP Package III)

- Package III Scope

- 4 streets: Henry St (Water & Sewer), Surrels Ave (Water Only), W. Gramercy Pl (Water Only), Rounds St (Sewer Only) – 290 Calendar Days
 - Sewer – 1,476 LF of 8-inch PVC sewer main (Open Cut-Replace in Place)
 - Water – 5,615 LF of 6-inch and 8-inch DI water mains (Open Cut)
 - Asphalt pavement restoration, curb/sidewalk/ramp and retaining wall replacement, sewer bypass plan, and traffic control plan.

- Site Specific Scope Overview

- **Henry St** (Water-NW 19th St east to Dead End; Sewer-NW 19th St east to NW 18th St)
 - Sewer – 665 LF of 8-inch PVC (SDR 26, ASTM D2241), replace in place, including 518 LF of 6-inch sewer laterals w/ 2-way c/o.
 - Water – 1,932 LF of 8-inch DI water main, 35 LF of 6-inch DI water main for tie-ins, and water service relays
- **Surrels Ave** (Fig Ave to Stains St)
 - Water – 2,048 LF of 8-inch DI water main, and water service relays and relocates
- **W. Gramercy Pl** (Blanco Rd to Dead End east of Aganier Ave)
 - Water – 1,035 LF of 8-inch DI water main, 53 LF of 6-inch DI water main for fire line and tie-ins, and water relays and relocates
- **Rounds St** (N Navidad St to N Sabinas St)
 - Sewer – 676 LF of 8-inch PVC (SDR 26, ASTM D2241), replace in place, including 757 LF of 6-inch sewer laterals w/ 2-way c/o.



Project Details (2022 SMP Package III)

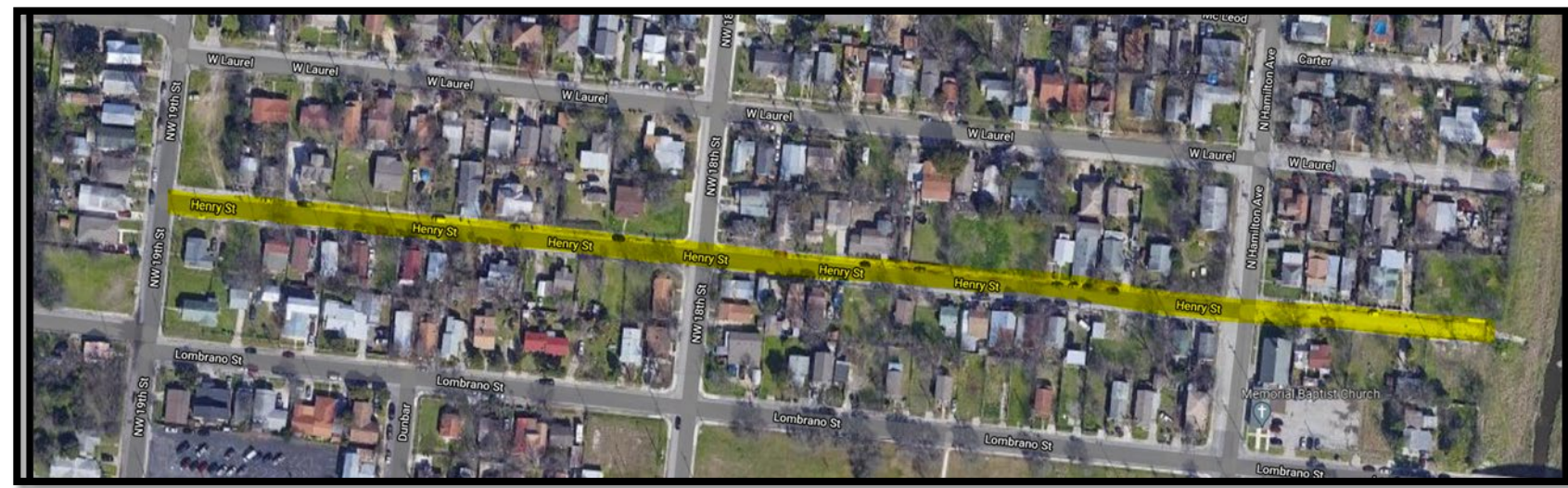
• Henry St (Water & Sewer)

- Residential road with narrow ROW, sewer in middle of street (replace in place, 3 new sewer manholes) and exist. water along south ROW (potholes conducted) and to be replaced adjacent to exist. water.
- Retaining wall – combination type (CoSA Spec 506) may require removal and replacement – Photo shown, bottom right.
- Power poles along sidewalk in project area – Photo shown, top right.
 - Contractor to verify the distance of power poles along project corridor in relation to face of utility trench and coordinate with CPS to determine if poles will be subject to bracing. Pole bracing allowance item provided in water improvement plans for reimbursement of pole bracing determined to be required.
- Prop. water will be within 9’ from exist. sewer beginning at N. Hamilton St to Dead End – new DI water main to include flowable fill 12” around prop. water main as shown on plans.
- Crossings under exist. sanitary sewer mains – to include flowable fill 12” around prop. water main as shown on plans.
- Exist. underground Google ductbank at NW 18th St intersection.
- Exist. 2” CI water line previously abandoned in place shall be removed and disposed off site as necessary – subsidiary in accordance with SAWVS Item 101.



Project Details (2022 SMP Package III)

- Henry St (Cont.)
 - Exist. Division Valve at Henry St and N Hamilton St to be replaced – see plan notes, sheet 12.
 - Exist. 6” AC water main adjacent to proposed DI water main – Contractor shall use caution while excavating as to not disturb the existing 6” AC water main and protect AC water main if exposed as necessary (NSPI).
 - AC pipe removal, transport and disposal where called out in plans and as necessary
 - Verify water services for each resident – Relay/relocate as shown, water meters in sidewalks or driveways shall be traffic rated
 - Mill & Overlay 18th St and Henry St intersection, and N Hamilton St and Henry St intersection – All M&O to be completed following both water and sewer improvements. N Hamilton St intersection is new asphalt within last few months and will require 50’ curb minimum Mill & Overlay per CoSA ROW.
 - Contractor to coordinate with residents and CoSA Public Services for traffic control plan.



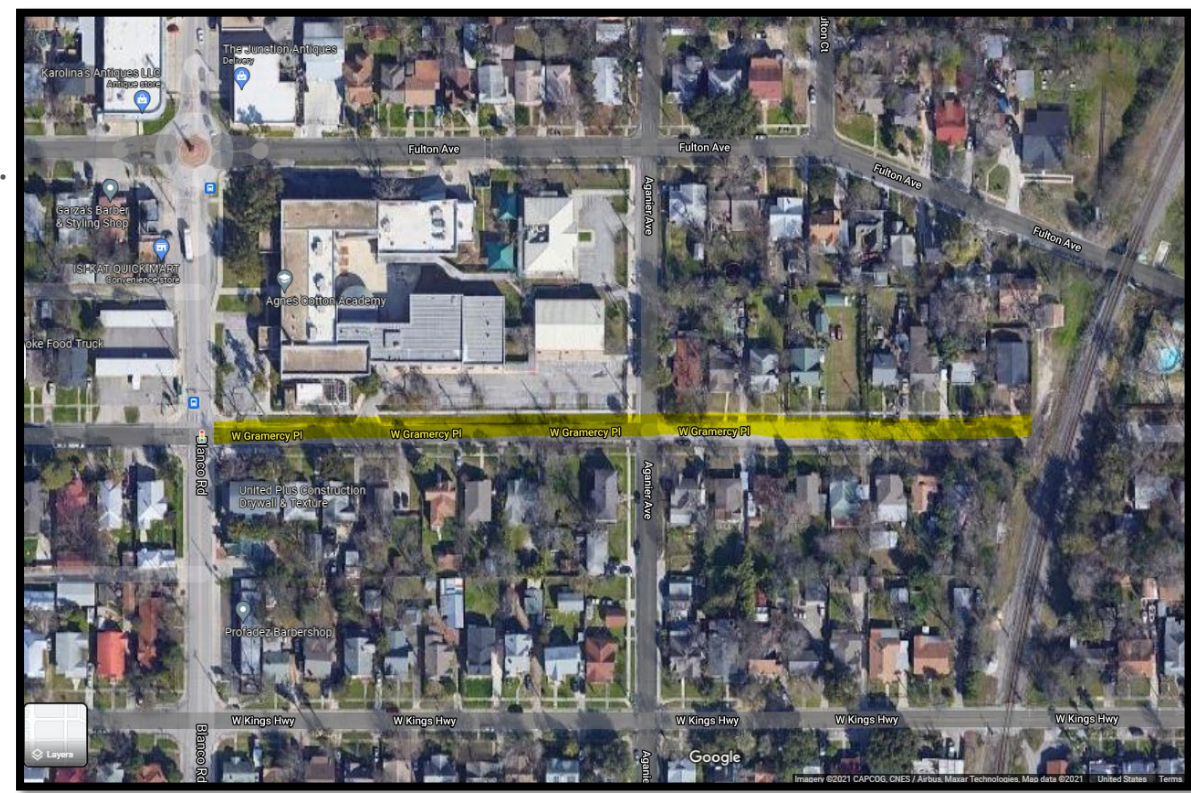
Project Details (2022 SMP Package III)

- Surrels Ave (Water Only)
 - Residential road with proposed water along south ROW opposite of exist.AC water along north ROW
 - QL-B SUE conducted on exist. 2” gas line along south ROW and determined to be away from prop. water
 - Exist. fiber optic lines along street curb on each side – Contractor to take caution when trenching for water services.
 - Water services shall be replaced and adjust locations of meter boxes as needed to green space between sidewalk and edge of pavement.
 - Four (4) new fire hydrants – Contractor to remove and salvage existing fire hydrants
 - Sidewalk and curb replacement as necessary at water service relays and relocates.
 - AC pipe removal, transport and disposal where called out in plans and as necessary



Project Details (2022 SMP Package III)

- W. Gramercy Pl (Water Only)
 - Residential road with proposed water on south side of ROW adjacent to exist. 6” AC water main (potholes conducted). Contractor shall use caution while excavating as to not disturb the existing 6” AC water main and protect AC water main if exposed as necessary (NSPI).
 - Work area near Cotton Elementary School – Contractor will be required to coordinate with school prior to construction for TCP and at least 2 weeks prior to performing any shutdowns or making any tie-ins that could impact the school.
 - Exist. 2” GI water line previously abandoned in place shall be removed and disposed off site as necessary – subsidiary in accordance with SAWS Item 101.
 - Crossings under exist. sanitary sewer mains – to include flowable fill 12” around prop. water main as shown on plans.
 - 24-inch-wide white line striping to be replaced as necessary at W. Gramercy Pl and Aganier intersection.
 - Water main ends in fire hydrant – dead end near UPRR ROW, no encroachment permitted.



Project Details (2022 SMP Package III)

- Rounds St (Sewer Only)
 - Residential road with narrow ROW, sewer in middle of street (replace in place, 3 new sewer manholes) and exist. water along south ROW adjacent to sewer.
 - Contractor shall use caution while excavating as to not disturb the existing 6" AC water main and protect AC water main if exposed as necessary (NSPI).
 - Exist. 8" gas line crossing at N Navidad St and Rounds St intersection.
 - Mill & Overlay of N Navidad St and Rounds St intersection as shown in plans.
 - Proposed sewer within 9' of exist. water - Flowable Fill included for entire limits of proposed sewer main, 12" all around pipe.
 - Contractor to coordinate with residents and CoSA Public Services for traffic control plan.



Project Details (2022 SMP Package III)

- Other Details:
 - All water service lines and sewer lateral locations shall be field verified prior to construction (NSPI).
 - Contractor to take extreme caution and care, hand digging (NSPI) may be necessary, when uncovering existing utilities (caution star shown on plans at utility crossings with proposed mains).
 - Where removal of fencing is necessary, temporary fencing may be required to secure private property and replacement of fencing in kind once work is completed (NSPI).
 - Flowable fill quantity on sewer plans includes quantity for encasing 12” around laterals that cross existing water mains or parallel to existing water services and separation distance cannot be achieved as per 30 TAC 217.53.
 - All sewer laterals are to be replaced to the property line with 2-way cleanout.
 - Typical Trench Pavement Restoration to be Performed for Proposed Sewer/Water main work
 - Trench to be restored with 10” Type B HMA and 2” Type D HMA per trench detail in water and sewer plans (flowable fill around prop. sewer and water as noted)
 - CoSA Arborist Tree Permit
 - Contractor to provide tree protection shown on plans and follow all requirements of tree permit (NSPI)
 - Any trees found on private property with branches that overhang onto public ROW may require trimming, pruning, and root protection for construction where identified (NSPI)



Project Details

2022 SMP Package IV (Nevada St.)



Project Details (2022 SMP Package IV)

In anticipation of the City of San Antonio’s Street Maintenance Program (SMP) project SAWS wishes to replace existing utility infrastructure as follows:

- **Nevada St.** from Hackberry St. to Monumental St.: Replace existing 12” AC water main with approximately 1,977 LF of new 6”, 8”, & 12” PVC water main including relaying water services. Replace existing 8” sanitary sewer main along Nevada St. from Hackberry St. to Spruce St. and from Pine St. to Monumental St., along Olive St. from Martin Luther King Dr. to Nevada St. and along Spruce St. from Nevada St. to Dakota St. with approximately 2,141 LF of 8” PVC sanitary sewer main including replacing sanitary sewer laterals and manholes.
- Common Items to Note Across All Locations:
 - Flowable fill required at multiple locations
 - Utility crossings
 - Some sidewalk and driveway reconstruction anticipated
 - City has replaced curbs, sidewalks and driveways along Nevada St. from Hackberry to Pine
 - Removal of AC water main at tie-ins
 - Tree protection required
 - Manholes shall include antimicrobial additive



Project Details (2022 SMP Package VI) – Nevada St (Water)



Nevada Street (Hackberry to Monumental)

- Water replacement goes from just east of Hackberry to Monumental and includes all side street tie-ins (Cactus, Olive, Spruce, Pine).
- City has replaced curb, sidewalk and driveways from Hackberry to Pine.
- Most of the water meters between Pine and Monumental are within private property and will need to be moved to the ROW.
- Typical City utilities lie within the project limits.
- A small portion of CoSA storm drain is located at the intersection of Hackberry and Nevada.

Project Details (2022 SMP Package IV) – Nevada St (Sewer)



Nevada St. (Hackberry to Spruce)



Olive St (MLK to Nevada)



Spruce St. (Nevada to Dakota)

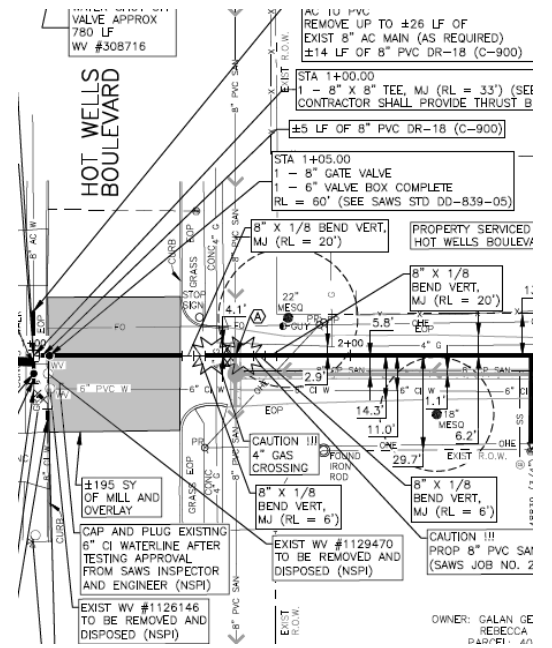


Nevada St. (Pine to Monumental)

- Sewer improvements are broken into four separate sections as shown above.
- Sewer between Spruce and Pine will remain in place.
- A small portion of CoSA storm drain is located at the intersection of Hackberry and Nevada.

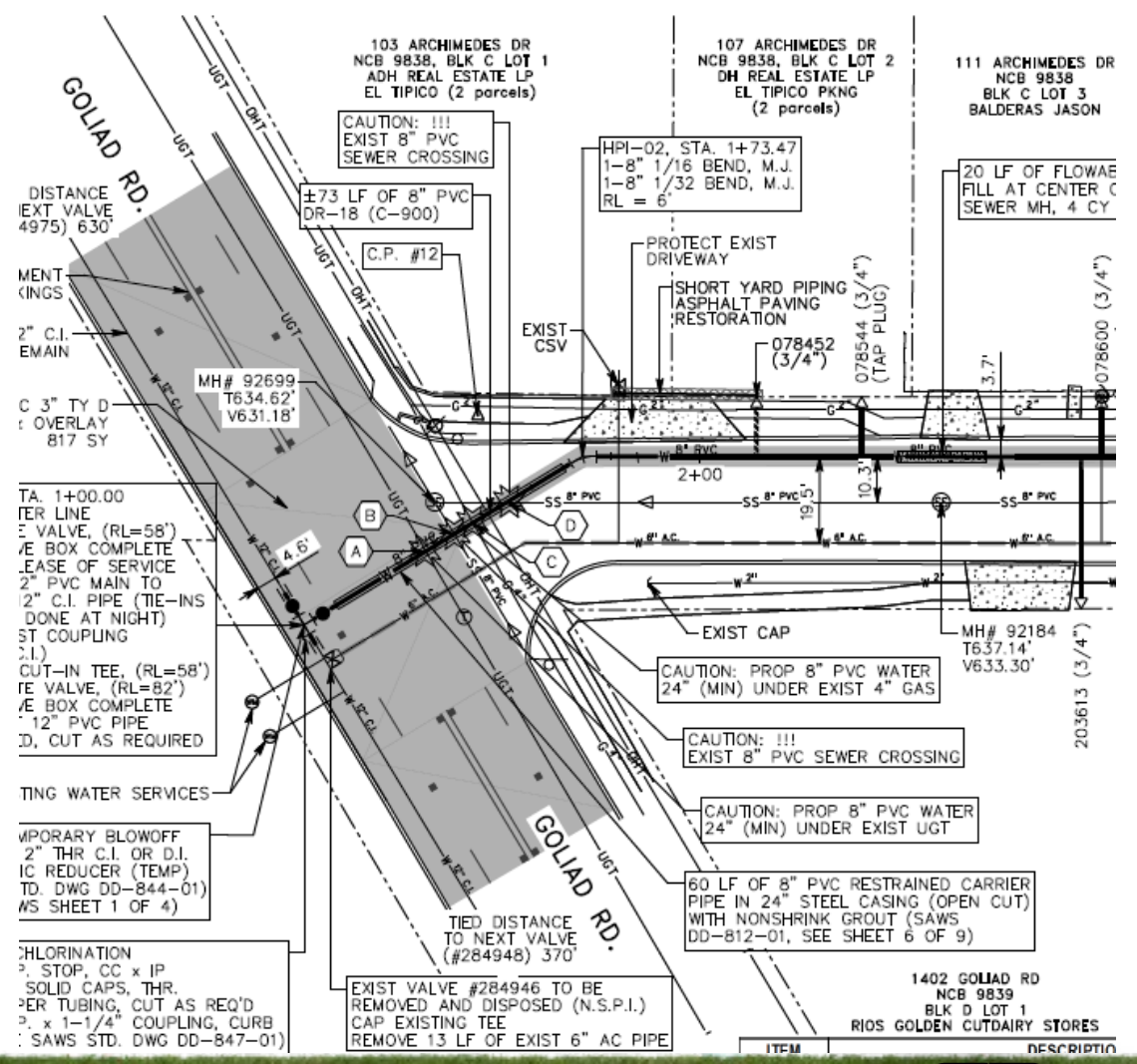
Project Details (Package V)

- State St from Hot Wells Blvd to Koehler Ct: Replace approximately 859 LF of 6" CI/AC water main and 664 LF of sewer main and manholes (water and sewer).
 - Hot Wells Blvd intersection shall be mill and overlay with 3" Type D. Koehler Ct intersection to be mill and overlay with 2" Type D
 - Multiple water services at 6018 State St and 6022 State St
 - Upstream end of sewer shall be extended past existing gas services to collect 6019 State St
 - Bypass Pumping required



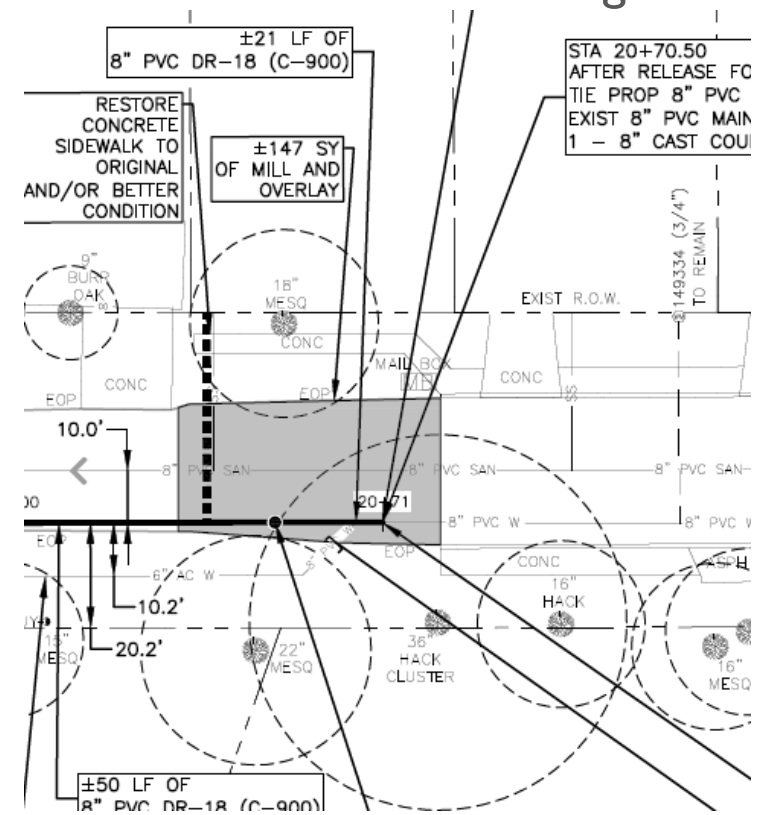
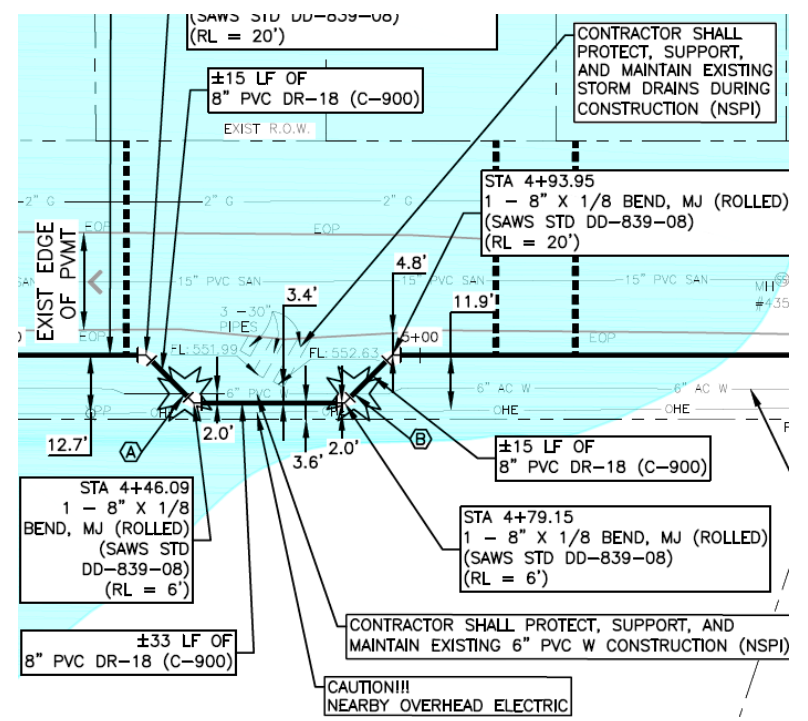
Project Details (Package V)

- Archimedes Dr from Goliad Rd to Purity Dr: Replace approximately 1,615 LF of 6" AC and 12" CI water main (water only).
 - Waterline has 60 LF of 24" steel casing to be installed via open cut across Goliad Rd
 - Contractor shall protect existing commercial driveway at 103 Archimedes Dr



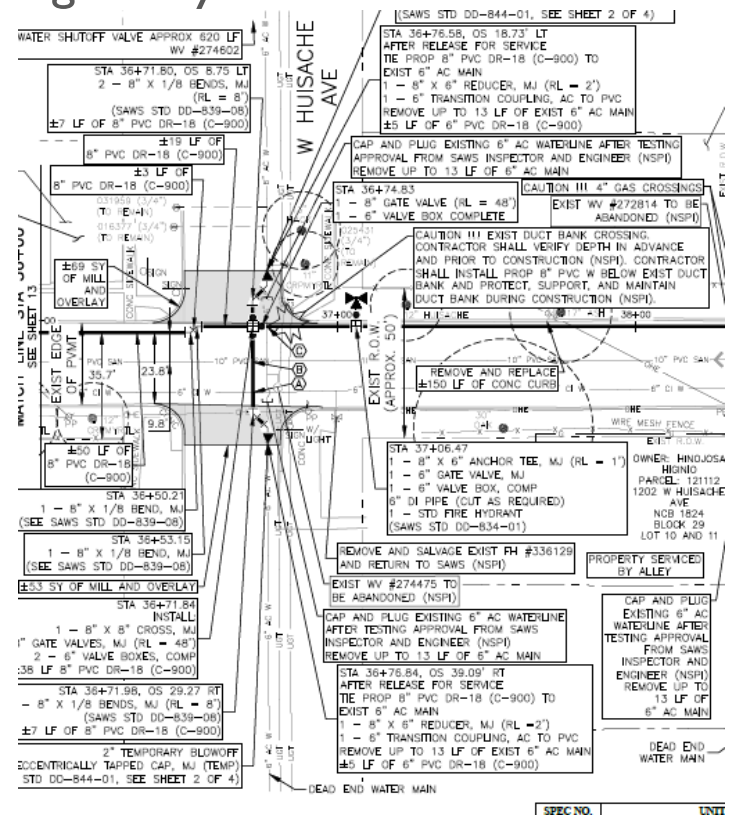
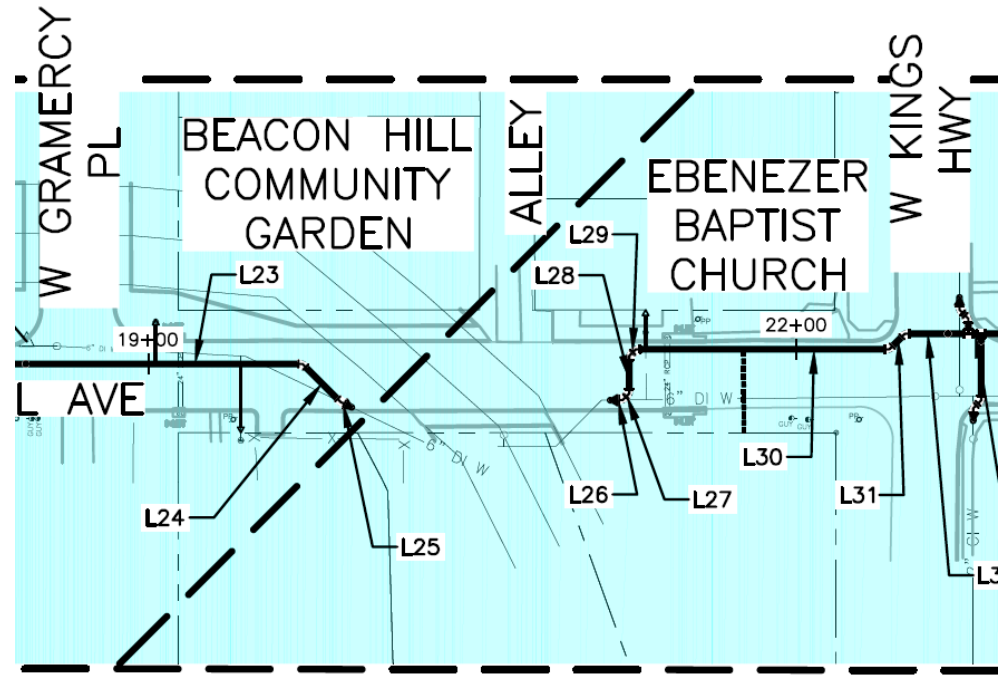
Project Details (Package V)

- San Juan Rd from Siluria St to Palos St: Replace approximately 2,001 LF of 6" and 12" AC water main (water only)
 - See existing condition of storm drains, waterline to be installed around existing storm drains
 - Mill and Overlay at tie-in near Palos Street



Project Details (SMP Capitol)

- Capitol Ave from Lullwood St to Woodlawn St: Replace approximately 5,140 LF of 2" - 12" water main (water only)
 - Water-tie ins around existing storm drain near W King's Hwy
 - Mill and Overlay at various side street tie-ins



Project Details (Package V & Capitol)

- All work is within the ROW, no easements are anticipated
- Normal working hours are anticipated. Refer to General Conditions
- Contractor will be allowed to work on multiple projects at the same time
- If required, asbestos handling and removal work plan to be in accordance with Specification Item 3000
- Customer Shut off valves to be added or replaced for every water service
- Project locations are within residential areas, be mindful of surroundings and residents
- Contractor shall repair and/or replace existing mailboxes to original or better condition if damaged during construction (NSPI)
- CoSA Tree Department coordination will be required. Contractor shall hand dig any water service, fire hydrant branch, or sewer lateral connections within 1/2 of the tree root protection zone (NSPI)



QUESTIONS?

Reminder: Oral statements or discussion during the pre-bid meeting today will not be binding, nor will it change or affect the terms or conditions within the Plans and Specifications of this Project. Changes, if any, will be addressed in writing only via an Addendum.

2022 SMP Packages I-V & Capitol

Sirahuen Guajardo Jr., P.E.

Project Engineer

Efrain Aguirre, E.I.T.

Graduate Engineer II

Susan Rodriguez

Contract Administrator

Florinda Gonzales

Contract Administrator

Stella Manzello

Contract Administrator

Marisol V. Robles

SMWVB Program Manager, SAWS

Andrew J. Wilkinson, P.E.

Project Engineer of Record

Greg Blackburn, P.E.

Project Engineer of Record

Bryan J. Spina, P.E.

Project Engineer of Record

Steven H. Thai, P.E.

Project Engineer of Record



**San
Antonio
Water
System**

Non- Mandatory Pre-Bid Meeting

September 17, 2021

MAKING SAN ANTONIO
WATERFUL

